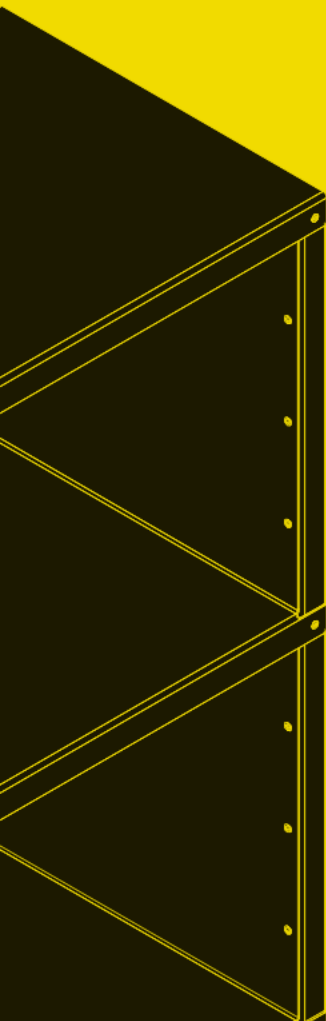




Nitō

Nitō

Nitō Accessories



Interactive document

Whenever you see this symbol on an image, you can open and edit the displayed piece of furniture in our online configurators.

Nitō

The construction for a piece of furniture was created from a typical connecting element for aluminium.

Nitō is simple, light, stands freely in the room and comes home fully assembled. Like a bridge, it is firmly riveted and functionally complemented by various accessories.

In two widths and six height gradations, Nitō is flexible as furniture and can be configured as a sideboard, shelf tower, storage unit, chest of drawers and more. Nitō is 35 cm deep, 40 or 75 cm wide and either 50.5, 88, 125.5, 163, 200.5 and 238 cm high.

Nitō can be supplemented to further customise its appearance and use. With shelf connectors it can be lined up, outsides and back panels change its appearance. Intermediate shelves, drawers and sliding doors extend the usability.

Design: Thomas Merkel, 1993/2021



System components

Material:

Aluminium powder coated RAL

Standard colours:

Zinc yellow RAL 1018

Oxide red RAL 3009

Pastel blue RAL 5024

Reseda green RAL 6011

Light grey RAL 7035

Traffic white RAL 9016

Traffic black RAL 9017

Special colour RAL

Article:

Nitö 1 - width 40 cm

Nitö - 1/1 - 40 x 35 x 50.5 cm

Nitö - 1/2 - 40 x 35 x 88 cm

Nitö - 1/3 - 40 x 35 x 125.5 cm

Nitö - 1/4 - 40 x 35 x 163 cm

Nitö - 1/5 - 40 x 35 x 200.5 cm

Nitö - 1/6 - 40 x 35 x 238 cm

Nitö 2 - width 75 cm

Nitö - 2/1 - 75 x 35 x 50.5 cm

Nitö - 2/2 - 75 x 35 x 88 cm

Nitö - 2/3 - 75 x 35 x 125.5 cm

Nitö - 2/4 - 75 x 35 x 163 cm

Nitö - 2/5 - 75 x 35 x 200.5 cm

Nitö - 2/6 - 75 x 35 x 238 cm



Nitō



Nitō

Nitō 2/1, Nitō 1/6, Nitō 1/3 and 2/3
with drawers, constructive intermediate shelves, adjustable intermediate shelves



Nitō in detail

A small component is the backbone and heart of Nitō: a blind rivet nut that holds the individual elements together and at the same time serves as the basis for additions and connections. A wide variety of elements can be screwed to it.

Nitō is made of aluminium and is therefore still very light, even as a large shelf. This has many advantages, not only during transport. Its construction is stable even without a clamping cross. The surface is robust because it is powder-coated.

Nitō comes in 7 standard colours. Over 100 other RAL colours are possible.



Nitō



Nitō Accessories

Shelf connector



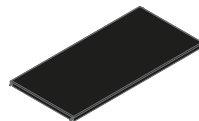
Wall fixing



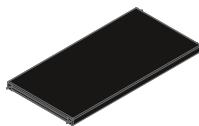
Outside



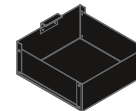
Adjustable intermediate shelf



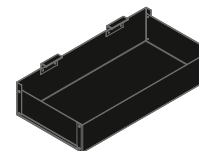
Constructive intermediate shelf



Drawer narrow



Drawer wide



Bracket to fix a single drawer



Sliding door and back panel profile



Sliding door and back panel profile, centered



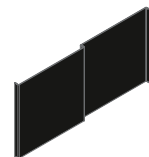
Back panel



Back panel with cable passage



Pair of sliding doors





Nitō 1/3 and 2/3
with drawers, constructive intermediate shelves, adjustable intermediate shelves



Nitō



Nitō 1/1

with constructive intermediate shelf and drawer



Nitō

Nitō 2/2

with sliding doors, back panels, connectors and outsides



Nitō

Nitō Accessories
with sliding doors, back panels, connectors and outsides



Nitō

Nitō 2/2
with back panels, connectors and outsides



Nitō 2/1
with back panels and back panel with cable passage



Nitō Configurator



Nitō can be planned and designed in the Configurator on our website. Rows of shelves can be combined in different heights and supplemented with the necessary accessories. 7 standard colours or one of the 100 possible additional colours can be selected. A PDF shows the composition with dimensions, articles and prices.

www.nito.design



Thomas Merkel

Thomas Merkel has been working with system furniture for more than 25 years. The S+ Systemmöbel collection currently includes nine designs by Thomas Merkel: in addition to shelves and corpora, tables and side tables. *"Nitō is based on a design from 1996 that I began to give new life to in 2018. On the one hand, the original design was further simplified by limiting it to one material, and on the other hand, functional elements such as drawers, back panels and sliding doors were added to the structure. The blind rivet nuts turn each node into more than just a connection, they provide contact points for further elements. The riveting creates a stable structure that does not require additional tensioning crosses. Nitō plays with the idea of the simple shelf structures we know. But it takes this idea further by offering matching, additional elements that thus turn a simple shelf into a more complex, more functional piece of furniture."*

www.thomasmerkel.de/en



Imprint

S+ Systemmöbel manufactures shelves, sideboards, tables and side tables that are characterised by a reduced design language and adaptability. They are well thought-out, unobtrusive and offer suitable variants for every situation in which they are used.

Nitō

Thomas Merkel

Photography

Constantin Meyer (except 22-23, 29 Private)

Errors and technical changes reserved.

1st edition August 2022

S+ Systemmöbel GmbH

Mohrenstraße 21

D 50670 Köln

Germany

Phone: +49 (0)221 923 926-0

Fax: +49 (0)221 923 926-29

info@systemmoebel-plus.com

www.systemmoebel-plus.com

www.nito.design





Systemmöbel

